

# NINE SEVEN EIGHT

"Elegance is when the  
inside is as beautiful as  
the outside."

-Coco Chanel



**PHONE:**  
866.230.1657  
**FAX:**  
855.279.1089

VISION-FABRICS.COM

## TABLE OF CONTENTS

- 4** A NOTE FROM THE DESIGN TEAM
- 6** PLUSH COLLECTION
- 10** HABERDASHERY COLLECTION
- 14** ISLAND VIBE COLLECTION
- 18** TRANQUILITY COLLECTION
- 22** ENDUREPEL
- 26** PRINTS COLLECTION





# A NOTE FROM THE DESIGN TEAM.

This seasons unique and ornate designs allow you to curate your own personal room settings. Define your own personal style and don't allow the limitations of mainstream trends to influence your designs.

We want to encourage creativity through personal expression.

**“Fashion is self-confident and fearless.”**  
- Alexander McQueen





# PLUSH



Indulgence with luxury allows us to personalize our home.  
More is more!



# PLUSH COLLECTION



## Bentley

Rich earthen tone faux fur.

Content: 100% Acrylic

Colors: 1  
87 Bronze



## Boho

Mongolian Sheep faux fur.

Content: 100% Acrylic

Colors: 1  
61 Cream

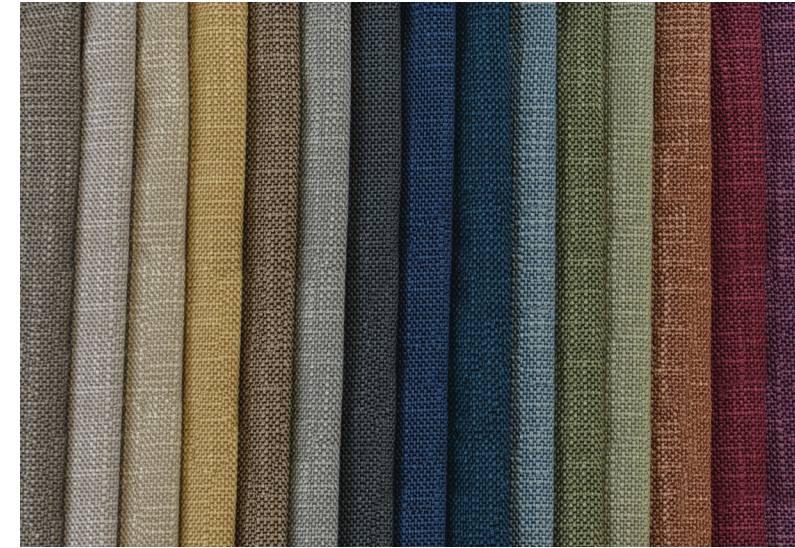


## Ritz

Luxurious gray-tone faux fur.

Content: 100% Polyester

Colors: 1  
91 Silver

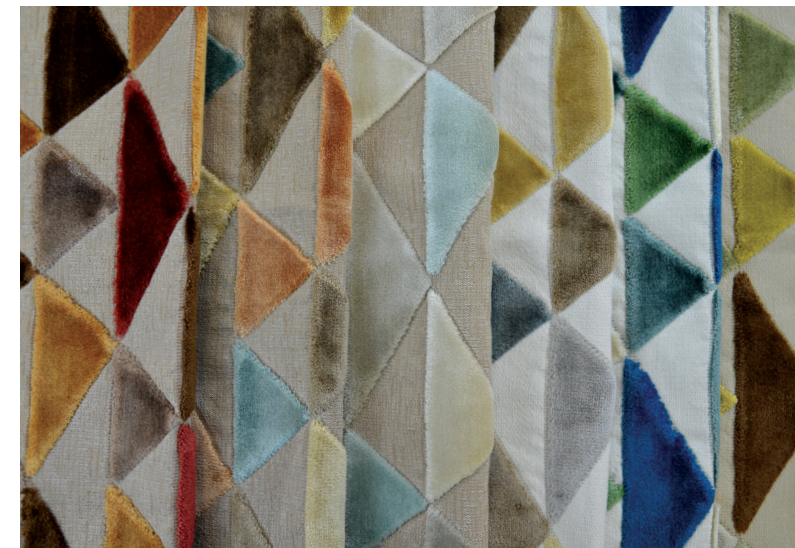


## Rival

Coarse blanket plain.

Content: 100% Polyester

Colors: 15  
94 Platinum, 908 Coal, 86 Camel,  
85 Wheat, 81 Taupe, 61 Stucco,  
608 Bark, 403 Cinnamon, 35 Petrol,  
306 Midnight, 303 Shadow, 205 Sage,  
202 Alpine, 14 Cranberry, 104 Plum



## Ovation

Cut velvet multi-colored triangle geometric.

Content: 80% Viscose, 20% Polyester

Colors: 6  
14 Damson, 804 Mojave, 92 Glacier,  
91 Mineral, 32 Crystal, 22 Lichen



## Zaria

Lustrous hammered metal look.

Content: 100% Polyester

Colors: 7  
88 Raisin, 47 Copper, 508 Nugget,  
22 Lichen, 66 Taupe, 91 Silver, 96 Slate



# HABERDASHERY



Menswear inspired classics with a twist are well-suited for today's modern approach.



# HABERDASHERY COLLECTION



## Antic

Small-scale grid with colorful prism effects.

Content: 100% Polyester

Colors: 4  
91 Alloy, 92 Sterling, 14 Carousel, 302 Glacier



## Conquest

Large scale chevron geometric with texture.

Content: 100% Polyester

Colors: 5  
306 True Blue, 87 Desert, 48 Pottery, 22 Lichen, 36 Mallard



## Elevated

A sophisticated, textured solid, with a top stitch effect.

Content: 100% Polyester

Colors: 5  
84 Camel, 601 Oyster, 906 Granite, 909 Domino, 306 Denim



## Embrace

Chenille crosshatch plain.

Content: 100% Polyester

Colors: 5  
305 Navy, 309 Raisin, 44 Ginger, 908 Charcoal, 91 Stucco



## Rivot

Multi-colored textural tweed.

Content: 100% Polyester

Colors: 6  
32 Baltic, 205 Mermaid, 202 Lichen, 64 Straw, 44 Terra, 91 Alloy



## Swagger

An ultrasoft textured solid with chenille yarns.

Content: 100% Polyester

Colors: 7  
906 Gunmetal, 306 Denim, 99 Mineral, 602 Oyster, 61 Buff, 90 Ash, 908 Tobacco



## Treaty

Windowpane plaid.

Content: 100% Polyester

Colors: 4  
91 Dove, 92 Flannel, 32 Baltic, 607 Jute



## Tycoon

Monochromatic chenille and boucle stripe with weave effects.

Content: 100% Polyester

Colors: 5  
91 Mushroom, 601 Ivory, 64 Sisal, 202 Spring, 34 Skipper



# ISLAND VIBE



Our intrinsic need for interaction with nature brings the outdoors inside. Beautiful foliage blends with an array of shapes and different hands for a tactile journey that “takes us away.”



# ISLAND VIBE COLLECTION



## Captiva

Octagon grid with textures.

Content: 86% Polyester, 14% Cotton

Colors: 4

91 Pumice, 34 Aegean, 202 Olive, 502 Golden



## Denali

Coarse crepe weave plain.

Content: 94% Polyester, 5% Linen, 1% Nylon

Colors: 15

601 Stucco, 63 Birch, 94 Platinum, 91 Pewter, 85 Teak, 95 Smoke, 909 Noir, 306 Blueberry, 35 Skipper, 303 Storm, 202 Pear, 506 Nugget, 403 Clay, 88 Bark, 14 Raisin



## Mambo

Watercolor abstract stripe.

Content: 100% Polyester

Colors: 5

48 Mojave, 14 Orchard, 202 Sawgrass, 302 Arctic, 31 Moonstone



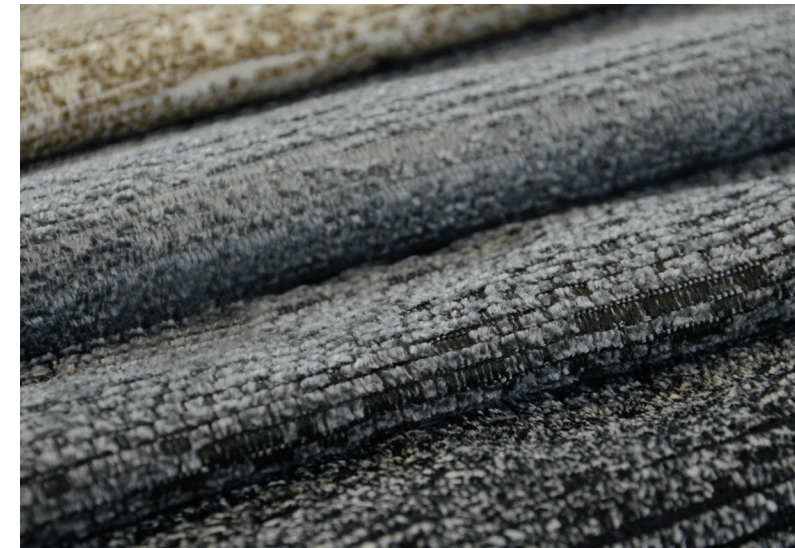
## Palmetto

Tropical floral.

Content: 100% Polyester

Colors: 7

202 Bloom, 305 Opal, 14 Plum, 91 Calypso, 61 Champagne, 302 Fresco, 86 Cognac



## Union

An ultra soft chenille plain with fibre dyed yarns.

Content: 100% Polyester

Colors: 4

81 Birch, 98 Shadow, 909 Domino, 99 Pepper



## Yates

Tweed look plain.

Content: 100% Polyester

Colors: 30 (15 new colors)

907 Mica, 92 Zinc, 91 Silver, 903 Ash, 909 Ebony, 601 Pearl, 25 Juniper, 305 Indigo, 44 Clay, 109 Cranberry, 105 Wisteria, 87 Taupe, 803 Toast, 96 Pecan, 85 Straw

\*15 original colors available - not shown



# TRANQUILITY



Simple shapes mix well with layers of color and texture to revive the spirit and soothe the soul.



# TRANQUILITY COLLECTION



## Dion

Stria textural pinstripe.

Content: 100% Polyester

Colors: 5  
607 Pebble, 602 Flax, 34 Crystal,  
306 Denim, 22 Elm



## Scoop

Textural plain.

Content: 100% Polyester

Colors: 15  
607 Driftwood, 91 Flannel, 64 Sand,  
804 Timber, 602 Limestone, 601 Ivory,  
92 Vapor, 98 Smoke, 202 Sawgrass,  
306 Copen, 303 Imperial, 35 True Blue,  
403 Spice



## Sorrento

Animal inspired overall.

Content: 100% Polyester

Colors: 5  
607 Mink, 86 Chocolate, 601 Eggshell,  
91 Seal, 306 Sapphire



## Tivoli

Multi-shape colorful geometric.

Content: 100% Polyester

Colors: 5  
48 Sunbaked, 45 Adobe, 202 Lichen,  
14 Carousel, 306 Maritime

**"Every day is a Fashion show, and [every room] is the Runway."**

**- Coco Chanel**





**ENDUREPEL™**  
FOR ALL OF LIFE'S LITTLE MESSES.

Endurepel™ is a performance finish applied to woven fabrics and PU textiles.

**Endurepel™ Shield** provides woven fabrics with anti-stain and moisture repellent technology, combined with easy cleanability features and odor protection, available on stocked items or as an after treatment on most woven products.

The **Endurepel™ Armour** top coat protection provides an easy clean finish, antibacterial and anti-mildew properties. Armour is available on our PU, Premier, and our newest PVC product, Challenger.



**ENDUREPEL™**  
SHIELD



**ENDUREPEL™**  
ARMOUR





# ENDUREPEL FUNDAMENTALS II



## Boca

Stocked Endurepel Colors: 4

All Available Colors: 16

\*can be after treated



## Bondi

Stocked Endurepel Colors: 5

All Available Colors: 15

\*can be after treated

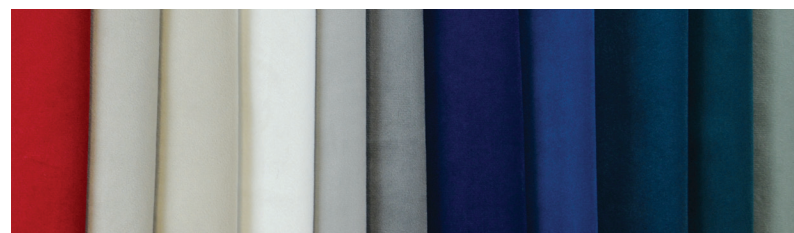


## Cocoon

Stocked Endurepel Colors: 4

All Available Colors: 8

\*can be after treated



## Franklin

Stocked Endurepel Colors: 11

All Available Colors: 28

\*can be after treated



## Fusion

Stocked Endurepel Colors: 4

All Available Colors: 15

\*can be after treated



## Harper

Stocked Endurepel Colors: 6

All Available Colors: 15

\*can be after treated



## Intrigue

Stocked Endurepel Colors: 7

All Available Colors: 17

\*can be after treated

# TOP SELLERS WITH ADDED PERFORMANCE

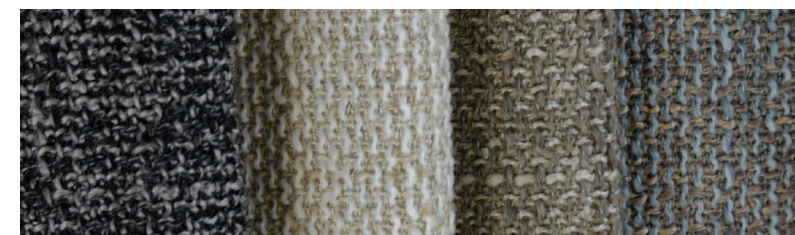


## McCoy

Stocked Endurepel Colors: 9

All Available Colors: 15

\*can be after treated



## Medley

Stocked Endurepel Colors: 4

All Available Colors: 15

\*can be after treated

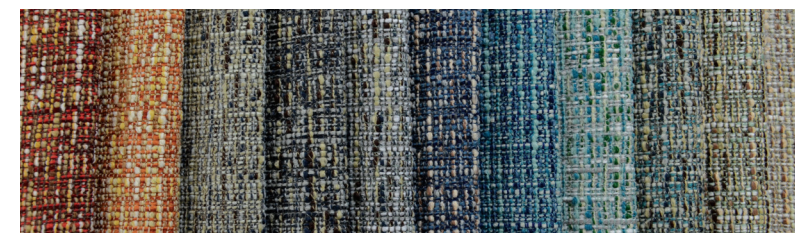


## Mia

Stocked Endurepel Colors: 6

All Available Colors: 16

\*can be after treated



## Moritz

Stocked Endurepel Colors: 11

All Available Colors: 19

\*can be after treated



## Muse

Stocked Endurepel Colors: 8

All Available Colors: 15

\*can be after treated



## Nomad

Stocked Endurepel Colors: 3

All Available Colors: 8

\*can be after treated



## Pace

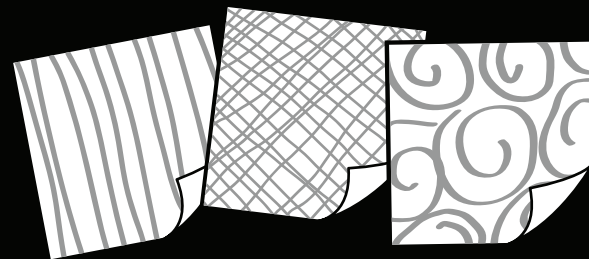
Stocked Endurepel Colors: 3

All Available Colors: 15

\*can be after treated



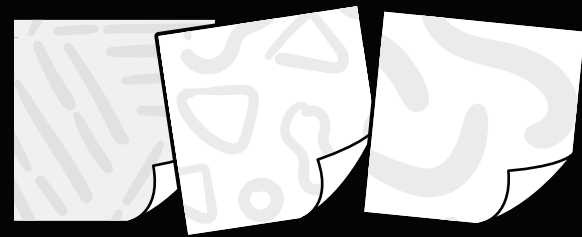
# CUSTOM PRINTS TO FIT YOUR STYLE



## CHOOSE YOUR BASE CLOTH

CHOOSE FROM:

- LINEN
- ORGANIC
- TEXTURED
- VELVET



## CHOOSE YOUR PRINT

CHOOSE FROM:

- ONE OF OUR STOCKED PRINTS  
OR
- USE YOUR OWN ARTWORK

## DESIGN IT YOUR WAY GET CREATIVE

**SPECIAL ORDERS - 1 ROLL MINIMUM**

SPEAK TO YOUR SALES PROFESSIONAL FOR LEAD TIME

## PRINTS

### NEW STOCKED PRINTS



#### Folio

Simple torn paper shapes in dramatic color combos are amplified on the course raw linen like base.

Colors: 4

14 Canyon, 306 Caspian (Full Repeat Shown),  
54 Tundra, 17 Ambrosia

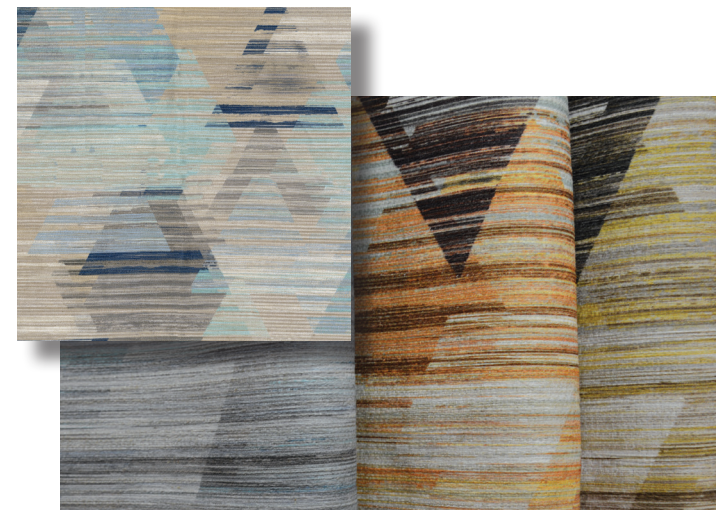


#### Mystique

Modern take on the ikate pattern, inspired from global travels, on a natural seagrass like base.

Colors: 4

21 Seamos, 14 Raisin, 61 Mineral, 36 Indigo  
(Full Repeat Shown)



#### Prism

Layered geometric shapes with a striated vibe are emphasized by the natural repp base cloth weave.

Colors: 3

36 Caspian (Full Repeat Shown),  
64 Sundance, 57 Marsh



#### Savvy

Multicolored mosaic diamonds create a "one of a kind" piece showcasing a plush hand with an added glitz of foil overlay.

Colors: 4

36 Vapor (Full Repeat Shown), 21 Jungle,  
14 Adobe, 32 Sedona





**VISION**  
**FABRICS**

DESIGNED FOR YOUR SUCCESS.

**PHONE:**

866.230.1657

**FAX:**

855.279.1089

**VISION-FABRICS.COM**